

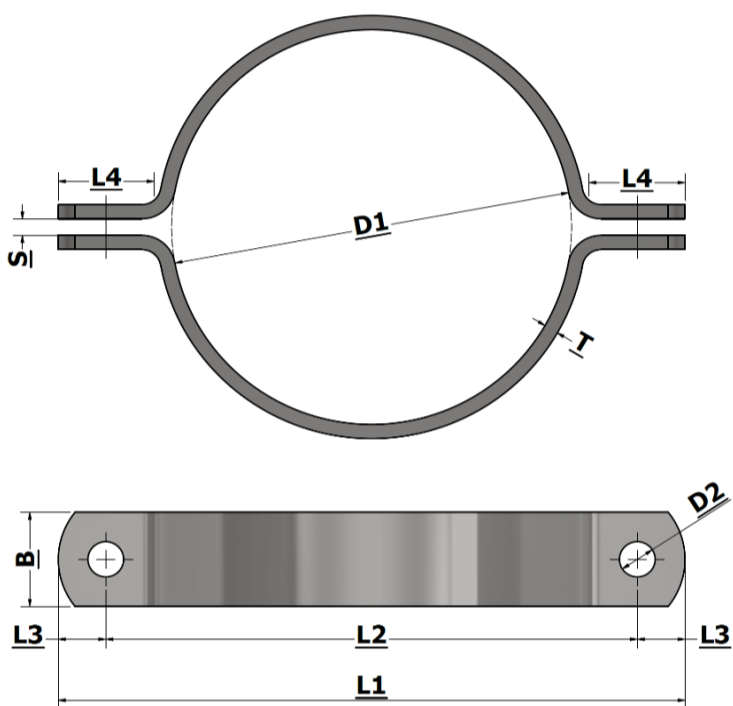
# Halsjern Pipe clamp



Todelt fladståls rørbøjle  
Fås sorte, primet, galvaniseret,  
rustfri AISI 304L og AISI 316L



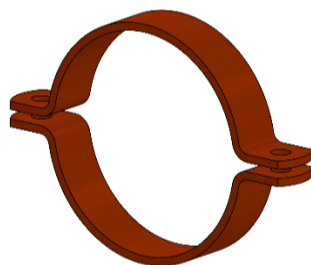
Two-part pipe clamp  
Black, primed, hot-dip galvanized,  
stainless AISI 304L and AISI 316L



Str. / Size	Rørdiameter / Pipediameter	DN str. / DN size	Tomme str. / Inch size	Bredde / Width	Tykkelse/ Thickness	Luft / Space	L1	L2	L3	L4	Bolt hul / Bolt hole	Bolt
D1 (mm)	(mm)	(mm)	(tommer)	B (mm)	T (mm)	S (mm)	(mm)	(mm)	(mm)	(mm)	D2 (mm)	(mm)
120	120			80	15	20	310	230	40	80	27	M24
122	122			80	15	20	312	232	40	80	27	M24
129	129			80	15	20	319	239	40	80	27	M24
133	133,1	100		80	15	20	323	243	40	80	27	M24
140	139,7	125	5	80	15	20	330	250	40	80	27	M24
146	146			80	15	20	336	256	40	80	27	M24
154	154			80	15	20	344	264	40	80	27	M24
159	159	125		80	15	20	349	269	40	80	27	M24
168	168,3	150	6	80	15	20	358	278	40	80	27	M24
178	177,8			80	15	20	368	288	40	80	27	M24
194	193,7	175	7	80	15	20	384	304	40	80	27	M24
200	200			80	15	20	390	310	40	80	27	M24
220	219,1	200	8	80	15	20	410	330	40	80	27	M24
225	225			80	15	20	415	335	40	80	27	M24
245	244,5	200		80	15	20	435	355	40	80	27	M24
250	250			80	15	20	440	360	40	80	27	M24
267	267	200		80	15	20	457	377	40	80	27	M24
273	273	250	10	80	15	20	463	383	40	80	27	M24
300	300			80	15	20	490	410	40	80	27	M24
318	318			80	15	20	508	428	40	80	27	M24
324	323,9	300	12	80	15	20	514	434	40	80	27	M24
356	355,6	350	14	80	15	20	546	466	40	80	27	M24
368	368	350		80	15	20	558	478	40	80	27	M24
406	406,4	400	16	80	15	20	596	516	40	80	27	M24
419	419	400	16 1/2	80	15	20	609	529	40	80	27	M24
457	457,2	450	18	80	15	20	647	567	40	80	27	M24
470	470			80	15	20	660	580	40	80	27	M24
508	508	500	20	80	15	20	698	618	40	80	27	M24
521	521			80	15	20	711	631	40	80	27	M24
610	610	600	24	80	15	20	800	720	40	80	27	M24
711	711,2	700	28	80	15	20	901	821	40	80	27	M24
813	813	800	32	80	15	20	1003	923	40	80	27	M24



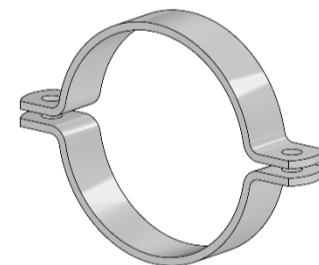
Sort  
Black



Primet  
Primed



Galvaniseret  
Hot-dip galvanized



Rustfri AISI 304L/316L  
Stainless AISI 304L/316L

